

LENNART GROUP PACKAGING & PRINTING MACHINERY 2024/2 PRODUCT CATALOG



LENNART
GROUP



STATE-OF-THE ART MACHINES
A Group of Visionaries Turned a Dream into Reality

Contents

- WHO WE ARE **03**
- WHAT WE DO **04**
- ECOSAFE BARRIER COATING MACHINE **05-08**
- SUSTAINABLE COATINGS **09**
- MACHINES FOR PACKAGING **10-15**
- KOMPAC AQ/UV COATING MACHINE **16-18**



WHO WE ARE

Innovative , Dreamer , Environmental

Our co-founders have dream of creating values for their employees, customers, and environment. That's why , we met in Rotterdam to create a company to make their dreams come true. Each co-founder has different expertise in different fields for many years. We have the marketing, engineering, and managing talents in one basket. Our mentality is to create high technology machinery and products to boost environmental sustainability.

Together with its clients, Lennart Group works towards achieving clear competitive advantages and upgrading company value over the long term. Our customers are our partners. Our mission is to reach zero plastics in all packaging industries. All developments are for sustainable products to create value for our customers and humanity. Together with our partner KOMPAC Technologies ,LLC (USA) . Ecosafe Barrier Coating machine is developed for sustainable packaging .

WHAT WE DO

MULTI CONTINENT

PRODUCTION SITES WITH STRONG PARTNERSHIPS

Kompac



NETHERLANDS - USA - TURKIYE



PARTERSHIPS

Lennart Group is not only producing machines . We also have partnerships with multi companies for expending globally. Our partners have high expertise in their area.

KOMPAC TECHNOLOGIES ,LLC - USA
CMCC MACHINERY - TURKIYE



E C C O
S U S
P A C
B A R



STATE OF ART BARRIER COATING TECHNOLOGY

Unlocking all potentials

Applying multi coatings in one pass

Wide range of paper 35g/m² - 1200 g/m²

Up to 12 g/m² Wet coating in one module

Patented Hybrid coating system .

Patented Drying system for high performance

Auto coating thickness control (PATENT PENDING)

Coat On-Demand . Speeds up to 120 meters/minute .

Fast change-over (Less than 3 minutes) for different coatings.

Auto Cleaning System (PATENT PENDING)

IOtech4.0 network accessible recipes and database.

Auto Coating Thickness Measurement System

Live Camera integrated

Saves up to 500 different recipes inside system

Integrated multi coating stations (PATENT PENDING)

Less machine space required . Length depends on module

New EcoDry Module for Lower energy consumption



1 g/m²
12 g/m²

Each Module Wet Coating
Thickness



35 gsm
1200 gsm

Minimum Paper Weight
Maximum Paper Weight



140m/min

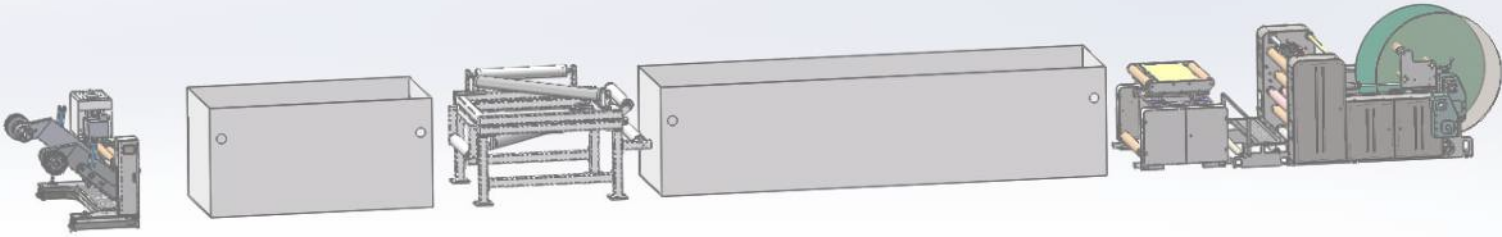
Eco2web Max Speed



7000
sheet/hour

Eco2sheet Max Speed

6



Eco2Web 20"-30"-48"

Widths:

Eco2Web 20" : 50 cm

Eco2Web 30" : 77 cm

Eco2Web 48 : 120 cm

**SUSTAINABLE WATER
BASED COATINGS
VEGAN BASED COATINGS**

**GAME CHANGER
TECHNOLOGY**

MADE IN USA BY

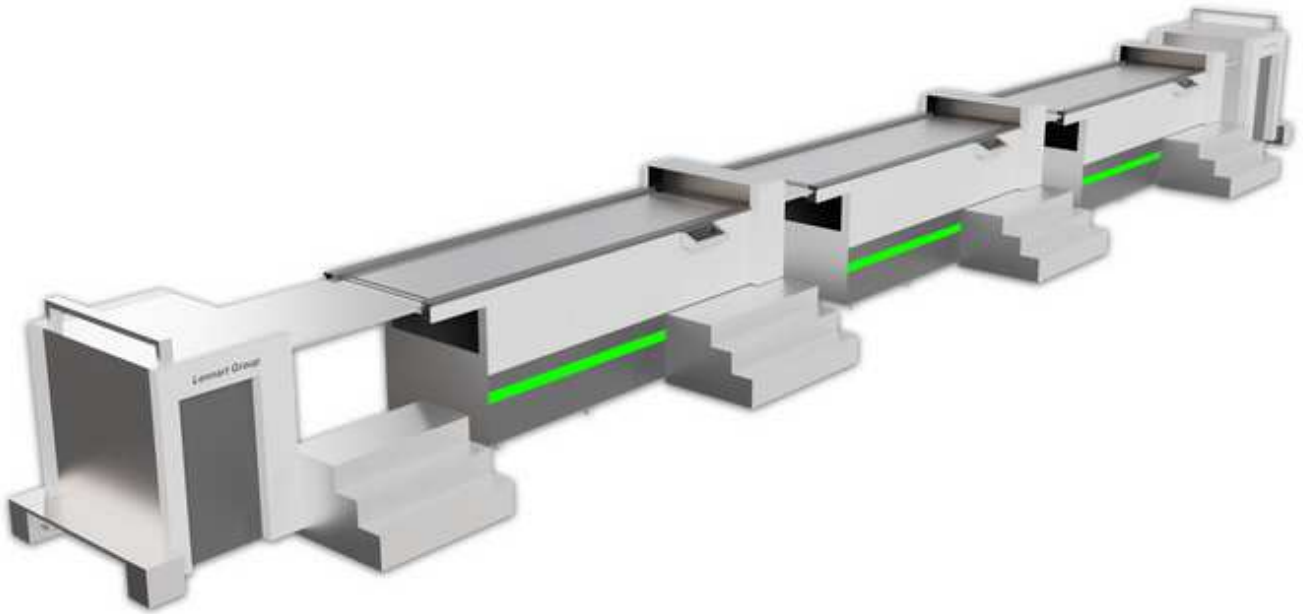
Kompac

- High Speed up to 120m/min
- Paper weight from 35 gsm to 600 gsm .
- 30 " (770mm) Roll width .
- One Operator Usage
- Coating g/m2 : Adjustable up to 6 gram /m2 Dry (Each Module)
- Adjustable coating thickness from PLC .
- 3 coating module configurable .
- Jumbo roll Unwinder and Rewinder .(1500mm DIA -55 ")
- Automatic tension control with web guide .
- Double side coating module
- Eco Dry module for low energy consumption
- Slitting Module

**PATENTED MULTI COATING
UP TO 4 + 4 MODULE**



7



Eco2sheet 20"-30"-48"

Widths :

Eco2Sheet 20" : 50cm X 105cm

Eco2Sheet 30" : 77cm X 105 cm

**SUSTAINABLE WATER
BASED COATINGS
VEGAN BASED COATINGS**

**COAT ON
DEMAND
TECHNOLOGY**

Kompac®



LENNART GROUP 2024

- Paper weight from 130 gsm to 900 gsm .
- 3 set coating module
- Sheet Turner for double side coating
- Sheet- Jam detections system
- Coating : Adjustable up to 6 gram /m2 DRY (Each Module)
- Up to 7000 sheet/per hour :
- Minimum Sheet Size ;
- High Pile Suction Feeder (1500mm Pallet Height)
- High Pile Pallet stacker (1500mm Pallet Height)
- EcoDry for low energy consumption
- Coat On Demand technology
- One Operator

**IOTECH4.0
INDUSTRY 4.0**



8



Sustainable Water-Based Coatings

NOTE : The Coatings are only for Ecosafe Barrier Coating Machine Users

Selection of 400 different coatings for different functions .

Customers will have ready formulations for certain products .

New developments will be announced to customers .

Lennart Group will be working with new coating suppliers to have more flexibility .

Lifetime coating and formulations support to customers .

Paper and Coating combinations for the lowest costs .

Lab Tests and other supports will be given to customers .

A to Z BARRIER COATING SOLUTIONS IN ONE PACKAGE

HEAT SEAL COATING PERFECT FOR PAPER CUP APPLICATIONS FLEXIBLE PACKAGING WATER BARRIER INTEGRATED	WATER BARRIER POLYMER OR 50% VEGAN BASE	OIL - GREASE BARRIER 100% VEGAN BASE 100% POLYMER BASE 90 % VEGAN - 10% POLYMER BASE	OVENABLE / OIL BARRIER UP TO 220 DEGREE - 40 min
PRIMER POLYMER BASE - CREATING FLAT SURFACE ON PAPER	OXYGEN BARRIER / MOISTURE BARRIER CELLULOSE BASE	WATER BASED - PE State Of the Art PE coating for reducing extrusion PE applications .	WATER BASED - POLYESTER Heat Sealable - Biodegradable for various applications .
OIL - GREASE BARRIER (SEAWEED) 100% PLASTIC FREE-POLYMER FREE • Good OTR • Good MTR	Heat Seal - Grease 100% Plastic Free - Made from Casein		

PFAS FREE - FOREVER CHEMICAL FREE - PLASTIC FREE - FOSSIL FREE





LEN 108 BOX BLANKING /STRIPPING MACHINE



**BECKHOFF
AUTOMATION
INTEGRATED**

**500.000 -700.000
BOX/SHIFT**

- Maximum Sheet Size : 1080 mm (42.5in)X 780 mm (30.7in)
- Minimum Sheet Size : 300mm (11.8 in) X 300 mm (11.8 in)
- Maximum Stripping Size : 550 mm(11.65 in) X 650 mm(25.6 in)
- Minimum Stripping Size : 30 mm(1.18in) X 30 mm(1.18in)
- Speed : 25 Push / min
- Maximum Pile Height : 110 mm (4.3in)
- Double Head for 2 angle jobs
- Beckhoff Automation with Industry 4.0 (Online service & Job Report)
- 19" Beckhoff Touch Screen with Servo System
- Rexroth Hydraulics (Pistons-Valve-Block)
- Schmersal Security Sensor
- Festo Pneumatics
- Solid Robost Mechanical design
- Machine Power : 5 KW - 110V-380V
- Machine Weight : 3200 KG
- Machine Size : 3750mm X 1800 mm X 1900 mm

INDUSTRY 4.0

MADE IN ISTANBUL

LENNART GROUP 2024

SCHMERSAL
THE DNA OF SAFETY

EtherCAT

rexroth
A Bosch Company

FESTO



SICK
Sensor Intelligence.



**ONE SOLUTION
FOR ALL TYPE
OF BOXES WITH
MULTI ANGLE**

**EASY
OPERATION**

**CARTON
CORRUGATED**

**SMALLER
FOOTPRINT**

**EASY TOOL CHANGE
NO MOLD NEEDED**

ZEUS BOX BLANKING /STRIPPING MACHINE

- Maximum Sheet Size : 1080 mm (42.5in)X 780 mm (30.7in)
- Minimum Sheet Size : 300mm (11.8 in) X 300 mm (11.8 in)
- Maximum Stripping Size : 1050 mm (42 in)X 750 mm (30 in)
- Minimum Stripping Size : 30 mm(1.18in) X 30 mm(1.18in)
- Speed : 14 Push / minute (One time press for complete pile)
- Maximum Pile Height : 100 mm (4.2in)
- Multi angle jobs / carton / corrugated
- 12" Touch Screen
- Rexroth Hydraulics (Pistons-Valve-Block)
- SICK Security Sensor (HIGH)
- Festo Pneumatics
- Solid Robust Mechanical design
- Machine Power : 11 KW - 380V
- Machine Weight : 2200 KG
- Machine Size : 2400mm(7.8 FT) X 1590 mm(5.3 ft) X 2250 mm(7.4ft)

rexroth
A Bosch Company
FESTO



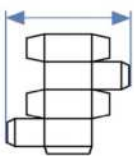
**EASY
INTEGRATION TO
ALL FOLDING
BOX GLUERS**

**FULLY ROBOTIC
AUTOMATION**

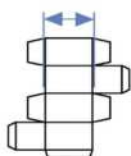
HARMONIA V2 FOLDING BOX COLLECTING AND PACKAGING LINE

- Box width 120mm-300mm
- Box inner width 80mm-300mm
- Box height 70mm-260mm
- Clamping size 350mm-550mm
-
- Clamping and Loading speed
- Clamping 300pcs boxes, 68000 - 72000pcs/h
- Clamping 400pcs boxes, 90000 - 96000pcs/h
- Clamping 500pcs boxes, 110000 - 120000pcs/h
-
- Max. loading speed: 4cartons/min
- Pallet size 1200x1200mm
- Palletizing height 1550mm
- Palletizing speed 4cartons/min
- Max. weight of carton ≤30kgs

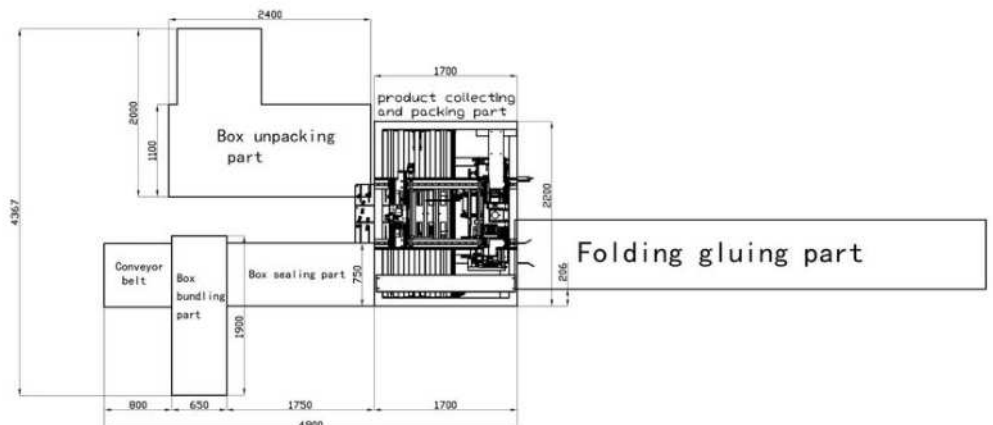
• Suitable Box Size



120mm-300mm



80-300mm





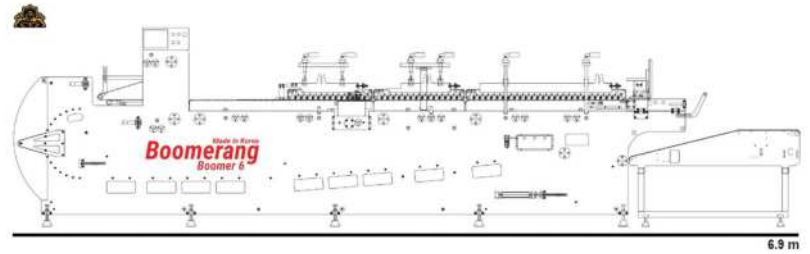
**EASY
INTEGRATION TO
ALL FOLDING
BOX GLUERS**

**AUTOMATION
INDUSTRY 4.0**

HARMONIA 600XL FOLDING BOX COLLECTING MACHINE AUTO SIZE ADJUSTING

- Model : Harmonia 600 XL - Industry 4.0 Integrated .
- Application: Cardboard, corrugated board E, N & F Craft Paper , E FLUTE ,
Straight line Double wall/ Crash lock bottom ,
4&6 corner/ Board case
- Max width: 50mm(1.96in)-550mm(21.65in)
- Max height: 80mm (3.14in)-540mm(21.25in)
- Speed : (20.000- 40.000 box / hour) One Operator
- (60.000- 80.000 box / hour) Two Operator
- Total power: 2 Kw
- Servo Motor : 2 Set
- Dimension: 3500mm(11.4ft)*2400mm(7,87ft)*1620mm(5.31ft)
- Weight: 1100kgs

BOOMERANG FOLDING BOX GLUER



**ONE OPERATOR ONLY
SHORT RUN JOBS
EASY ADJUSTMENT**

Main Features / *as optional



Main Controller



Prebreak



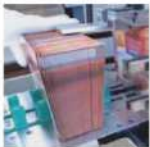
Crash-Lock



Lower Glue Pot (O.S.)



Press Conveyor (4.5 m)



*Batch Packer

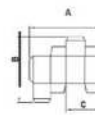


*Auto Glue Regulator



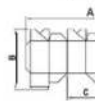
*Pocket Folder

Specification / Boomer 6



Straight line cartons

- A 80mm(2.36in) ~ 650 mm(25.6 in)
- B 50mm(1.96in) ~ 400 mm(15.74 in)
- C 23mm(0.9in) ~ 290 mm(11.41 in)



Lock-bottom cartons

- A 125mm(4.92in) ~ 600 mm(23.62 in)
- B max. 400 mm(15.74in)
- C 60 mm(2.36 in)~ 290 mm(11.41 in)



Double-wall cartons

- A 100mm(3.93 in) ~ 650 mm(25.6 in)
- B 60mm(2.36 in) ~ 400 mm (15.74 in)
- C 50mm(1.96 in) ~ 460 mm (18.11 in)

Machine Speed

20 ~ 250 meter / minute

Carton material

200 ~ 800 gsm

N/F/E flute

* depends on the carton design

Electrical connected load

13 kVA

Space requirements

6.9 (L)(22ft) x 1.2 (W)(3.93ft) x 1.7 (H)(5.57ft) m

**20.000 BOX/HOUR ONE OPERATOR
80.000 BOX/HOUR THREE OPERATOR
HHS COLD GLUE SYSTEM
ROBATECH HOT/COLD GLUE SYSTEM
EJECT OPTIONS AND ETC.**

MADE IN KOREA

ECO650 AUTO BOX PRE-FEEDER



MIN. SHEET SIZE :	120MM(W)(4,72") X 120MM(L)(4,72")
MAX. SHEET SIZE :	650MM(W)(25,6") X 400MM(L)(15,7")
LOADING CONVEYOR :	1,240 MM(42,3")
DIMENSION :	2,850 MM(L)(113") X 1,280MM (W)(50,4") X 1,560MM (H)(61.4")

**EASY
INTEGRATION TO
ALL FOLDING
BOX GLUERS**

**AUTOMATIC FEEDING
MADE IN KOREA**

M A T

D I G

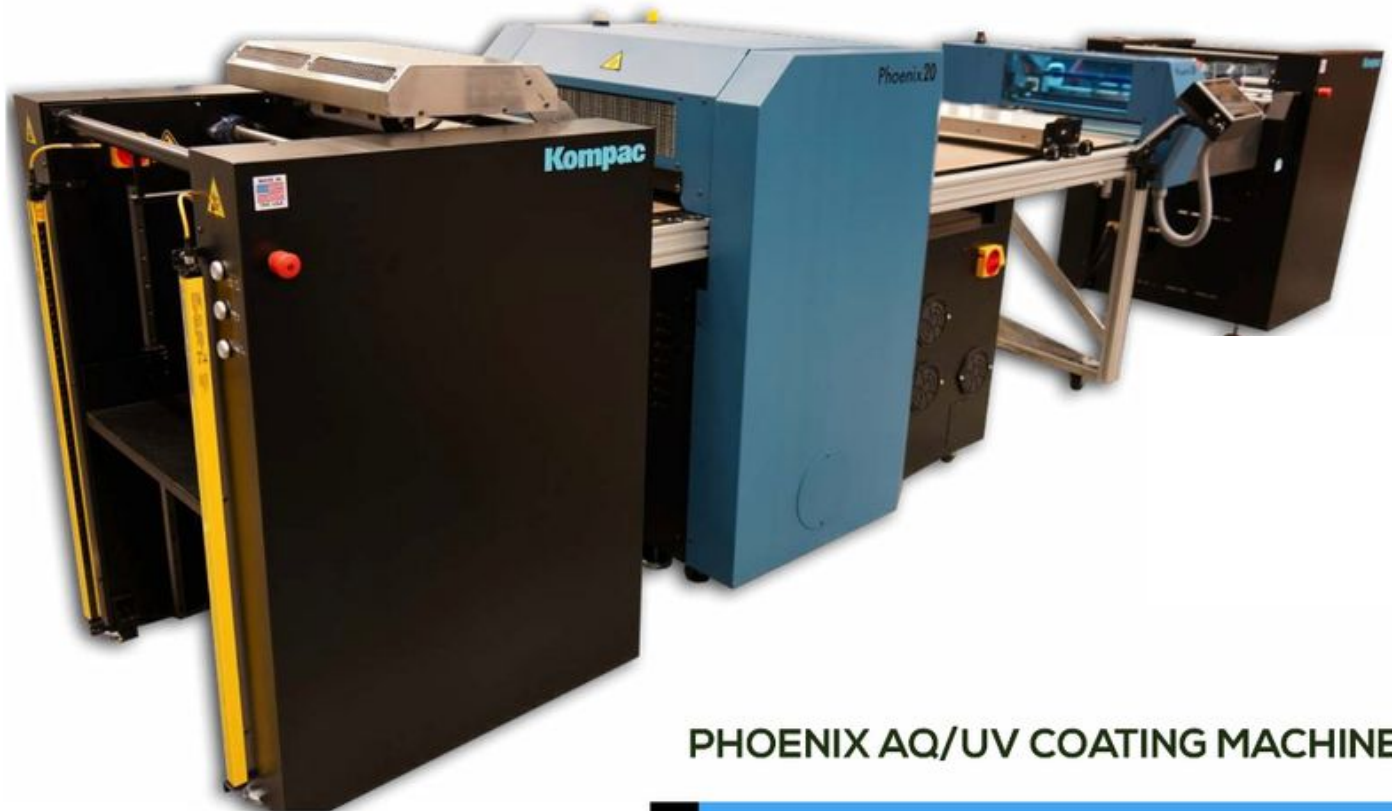
G L O

S F T

PHOENIX AQ/UV COATING MACHINE

Kompac

LENNART GROUP 2024



PHOENIX AQ/UV COATING MACHINE

Phoenix 20"-30"

Widths :

Phoenix 20" : 50cm X 102cm

Phoenix 30" : 77cm X 102 cm

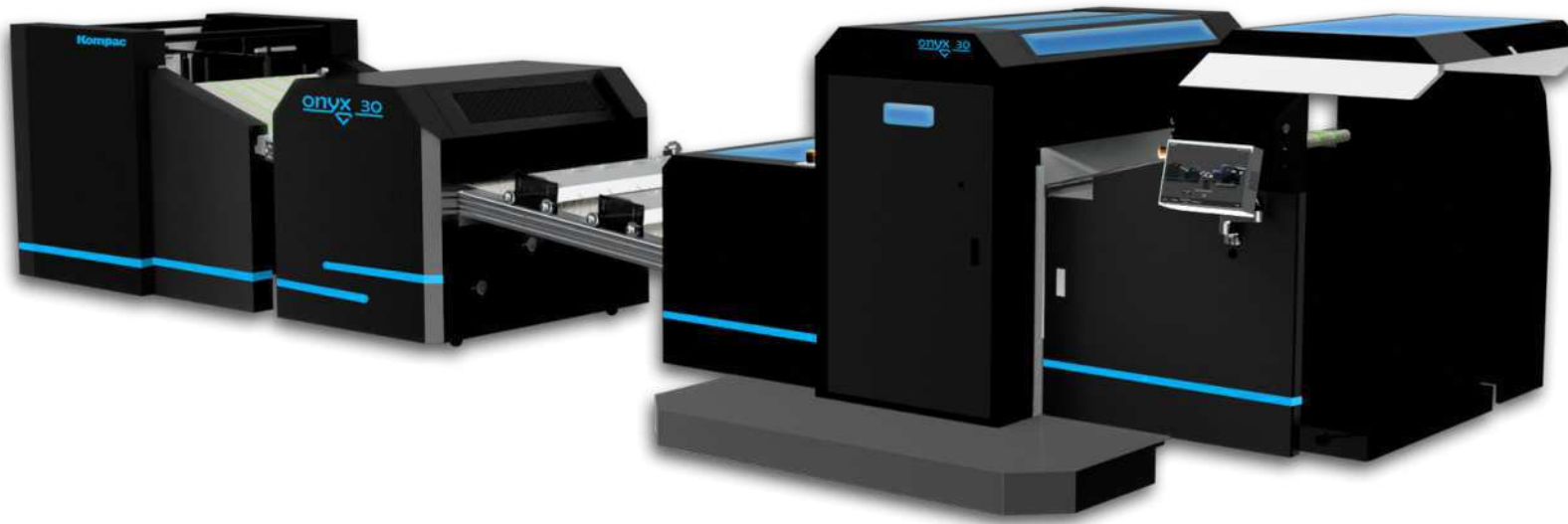
- Paper weight from 130 gsm to 540 gsm
- Sheet Turner for double side coating
- Sheet- Jam detections system
- UV and Water Based Coatings
- Anilox Roller upgrade for Matte and Soft Touch
- Online working with HP & FUJI and etc .
- Up to 4000 sheet/per hour (30" X 40") (77 cm X 105 cm)
- Minimum Sheet Size ; (10" X 10") (25 cm X 25 cm)
- Automatic Suction feeder .
- Automatic Pallet stacker
- Solid State UV Drier
- I/R Driers integrated

MATTE
GLOSS
SOFT TOUCH
PRIME (DIGITAL)
A/Q & UV

Kompac[®]



UV/AQ Spot Coating & Priming System
Premium Flood & Spot coating technology, all in one package.



Kompac®

Onyx 30

- Flood and spot coating substrates up to 22" x 32" (560mm x 800mm) and 3-30pt (60-600 gsm).
- Easily apply UV, aqueous, specialty coatings and primers.
- Flood or spot coat/prime at up to 6000 sph.
- Perfect solution for medium/large digital, commercial packaging, and label printers.
- High pile pallet stream feeder accepts pallets or dollies directly from digital or offset presses, eliminating hand loading and optimizing productivity.
- High pile pallet stacker handles 34" (86cm) lift, and provides the perfect stack, ideal for subsequent finishing operations.
- Optional chambered anilox system for soft touch and UV matte (max sheet 22" x 30").
- Optional die-cutting, creasing, and perfining.
- Optional IR dryer with patented short-wave, high intensity bulbs and air curtain (dual IR available).
- 2-minute coating change.

*Kompac Onyx 30 UV/AQ
flood and spot coating/priming system*

Kompac®



**LENNART
GROUP**

EMEA - APAC

Lennart Group B.V.

Address: Burgemeester Prinsensingel 84 ,4701 HP, Roosendaal
, The Netherlands
Tel : +31 618887010

www.lennartgroup.nl

E-mail: info@lennartgroup.nl

Lennart Group, LLC

3 Germay Dr. UNIT 4 #1430
Wilmington , Delaware , 19804

Tel / MOB : +1(908) 952 3286

www.lennartgroup.us

E-Mail : cem@lennartgroup.us

Lennart Group, LLC & Kompac Technologies ,LLC - CO-PARTNER

Kompac

LENNART GROUP
NETHERLANDS- USA

LENNARTGROUP.US

LENNARTGROUP.BV